

2020A

2020 9 10



(2)

2017A(

2)

2020A

2020A

2020 9 10

2020 9 10

1
1.1
1.2
1.3
1.4
1.5
2
3
3.1
3.2
4
4.1
4.2
5
5.1
5.2
5.3
5.4
6
6.1
6.2
6.3
7
7.1
7.2
7.3
8
8.1
8.2
8.3
8.4
9
9.1
9.2
9.3
9.4
9.5
10
10.1
10.2
10.3
10.4
10.5
10.6
10.7
10.8

1
1
1
1
3
3
4
4
4
8
8
9
10
10
11
12
13
14
14
14
14
14
15
15
15
15
16
16
16
16
17
17
18
18
18
19
20
20
21
21
23
24
29
30
32
33
40

1

1.1

生产安全事故综合应急预案

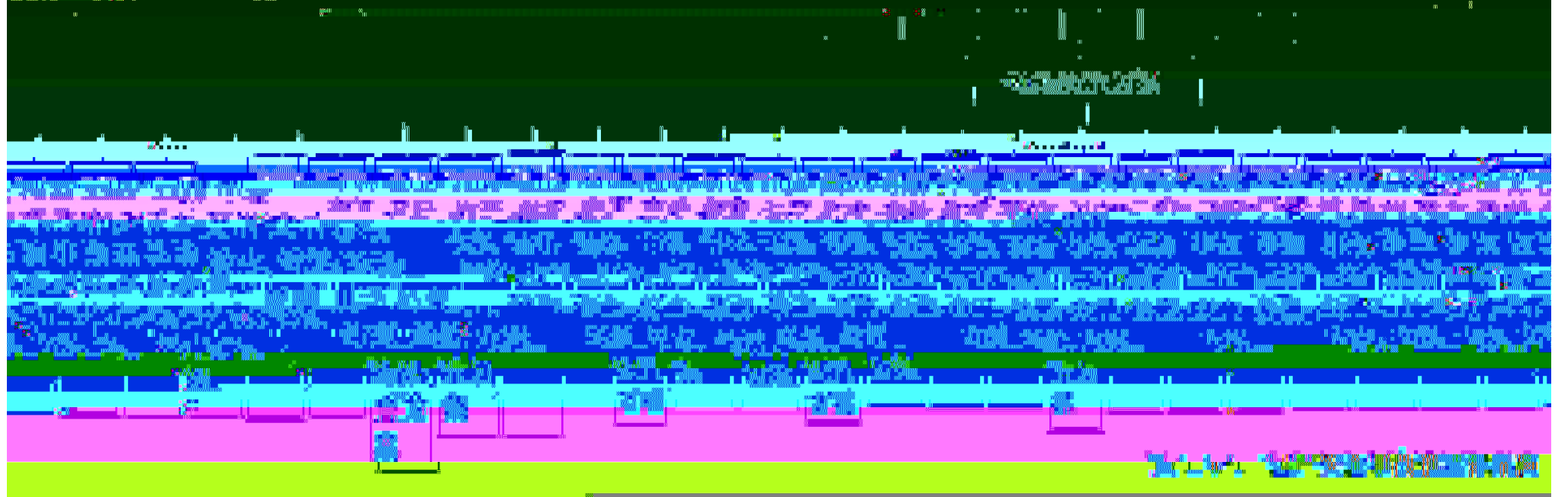
九项应急预案

压力容器
油库
供配电
职业健康

火灾
爆炸
中毒
窒息
坍塌
坠落
物体打击
机械伤害
触电
其他

液态气罐
涂装
特种设备

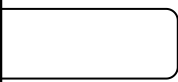
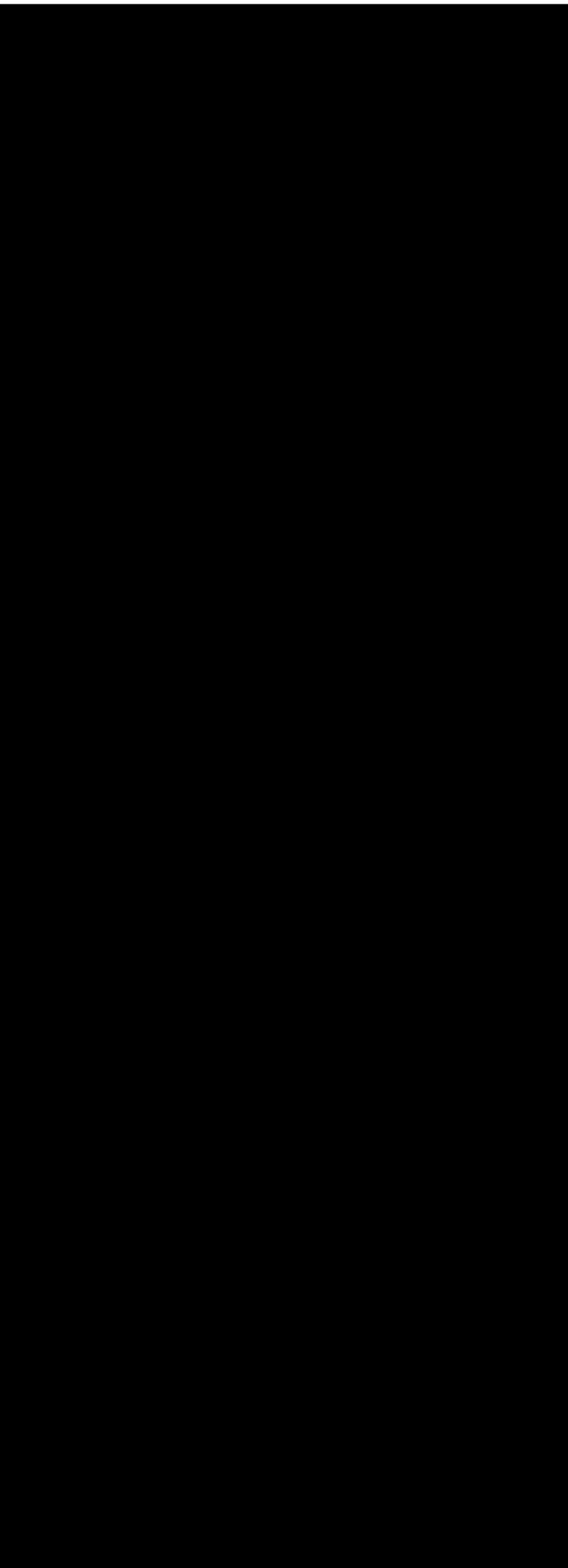
火灾
爆炸
中毒
窒息
坍塌
坠落
物体打击
机械伤害
触电
其他



2

2 1-1

1					
2					
3					
4					
5					
6					
7					
8					
9					
10					
11					
12					
13					
14					
15					



3.2.2

3.2.3

2

3

4

5)

4

1

2

3

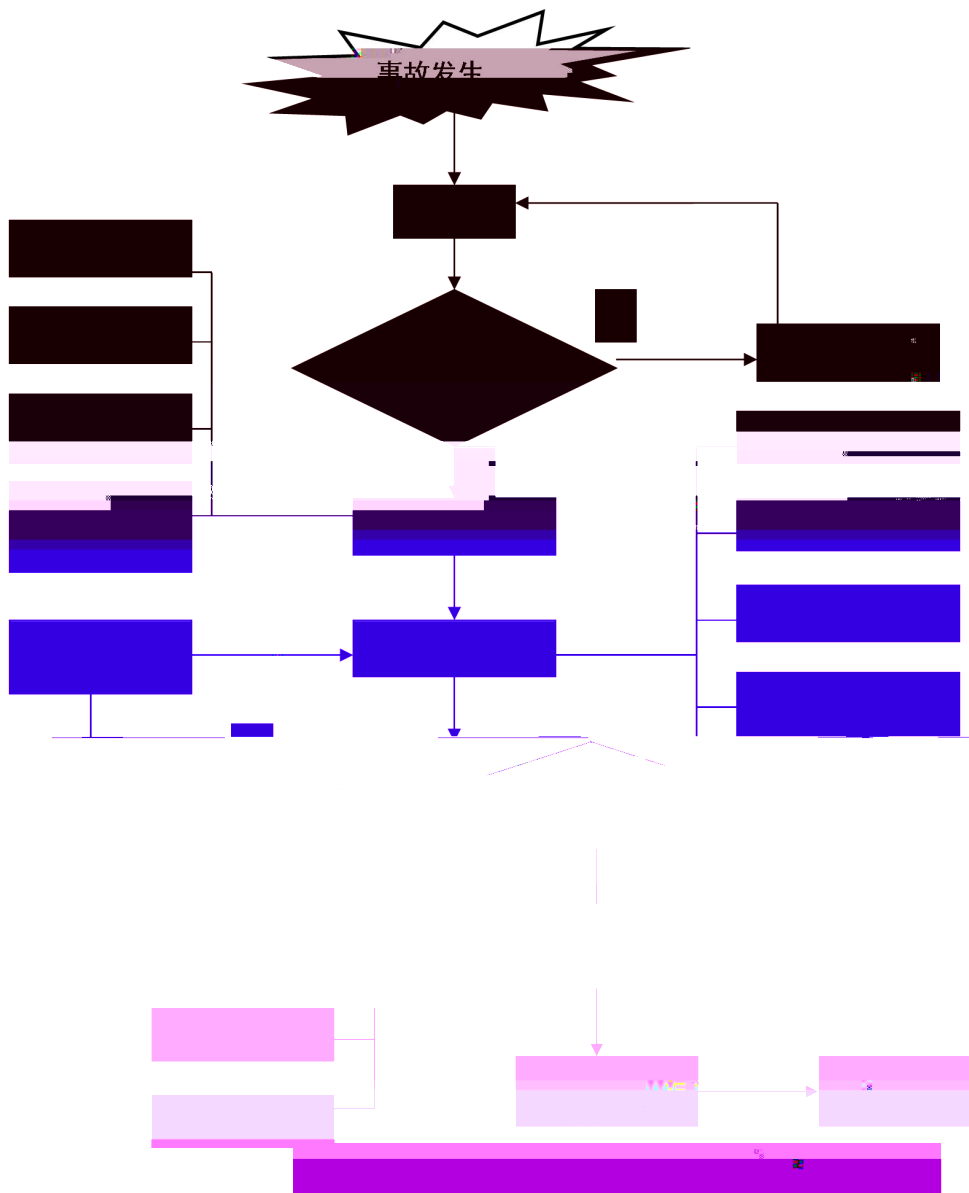
1

2

3

5

5.1-1



5.3.1

5.3.2

5.3.3

1

2

3

5.3.4

1

2

5.3.5

1

2

5.3.6

1

2

3

4

5.3.7

5.3.8

1

2

3

1

2

3

6

1

2

3

1

2

3

7

1

2

3

8

24

0551 - 63689592

0551 - 63689596

0551 - 63689408

24

1

2

3

4

9

9.1.1

1

2

9.1.2

1

2

3

4

5

6

7

8

9

9.1.3

9.1.4

1

2

3

1

2

3

4

5

1

2

3

9.4

9.5

10

10.1

10. 8. 1

10. 8. 2

10. 1-1

		668
		230601
		1993 9
		63689835 13905692671
		63689085
		2791
		61, 681. 7335
		20

8

10. 1-2

		m ²	m ²	
1		30500	30320	1
2		13622	14791	1
3		8436	7926	1
4		15095	13867	1
5		19825	19735	1
6		23106	22052	1
7		25704	25408	1
8		10030	10030	1
9		190	190	1
10	35KV	365	630	2
11		7510	25900	6
12				

10

360m²

10

324m²

21m²

15m²

14m²

10.2

10.2-1

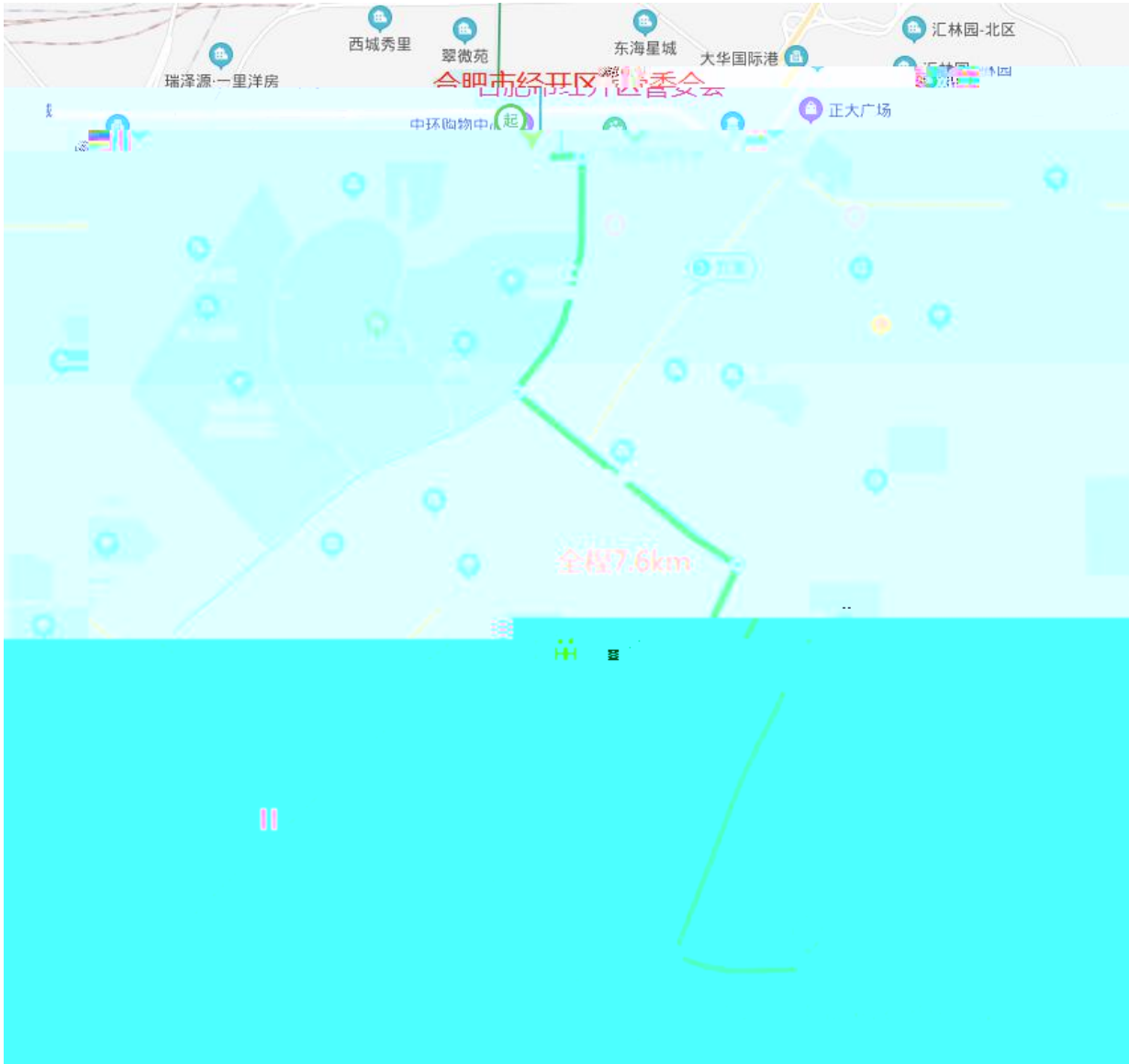
1		2014 13
2		2007 69
3	2019	2019 29
4		2013 4
5		708
6		2007 493
7	2013	645
8		2
9		2009 21
10		2009 141
11		2018 3 21
12		2018 3 21
13		2018 24
14		GB/T29639- 2013
15		GB6441- 1986

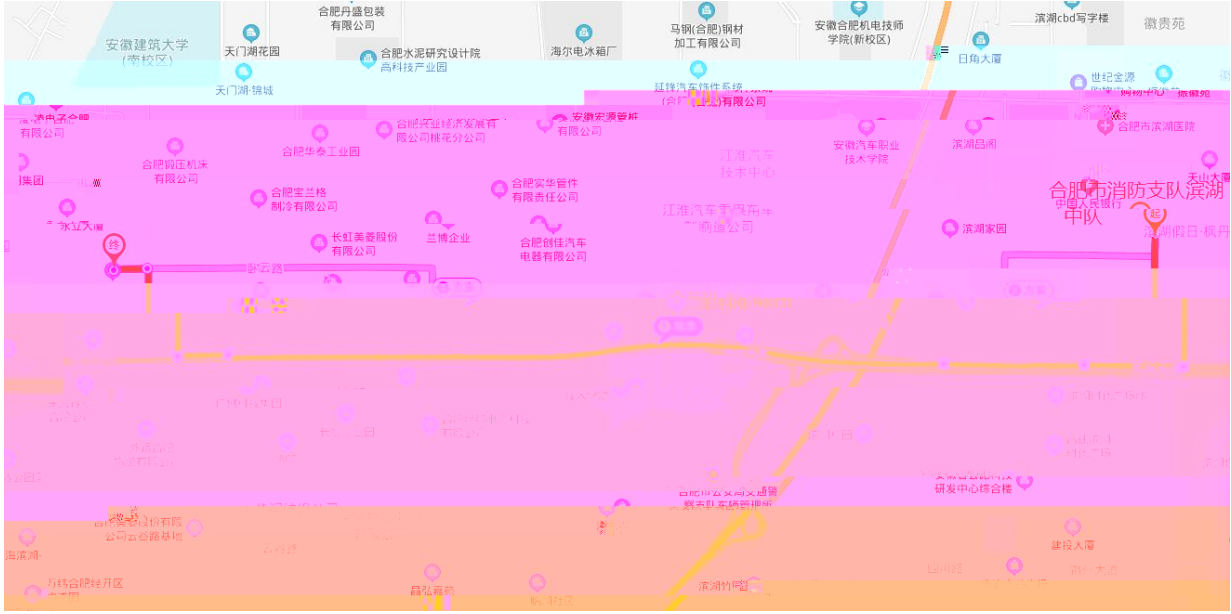
16		AQ/T9011-2019

10.3.1

10.3-1

				0551-63689835	13905692671
				0551-63689612	13955192650
					13705692935
				0551-63689526	13866102135
					13856006977
				0551-63689511	13505510051
					13955177267
					13956080714
					13955159790
					13955146322
					13856070408
					13956043661
					13955150989
					13966741051
					15256985859
					13739258453
					13856907697
					15804291512
					13955150989
					13956930396
					13956043661
					13855138318
					13515643075
					18788899500
					15856995525
					13955164509
					13966768851
					13955142062
					15956970511
					18134512393
					13955133909
					13866660964
					13721099848





10. 4-1

				/	
1					
2					10
					18
3				13	
4					897
					929
					229
			4KG	4KG	4193
			35KG	35KG	48
					33
					1
					8
					16
					42
					4
5					2
					11
6				21	

"

"

10.5-1

1		1		
2		35		
3		24		
4		40		
5		24		
6		15		
7		25		
8		1		
9		1		
10		1		
11		3		
12		1		
13		2		
14		5		
15		500		
16		1000		
17		1000		

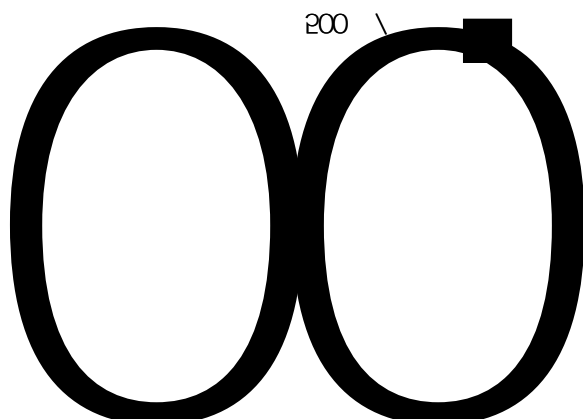
18

1000

19

500 /

800



00

1					
2					
3					
4					
5					
6					
7					
8					
9					
10					
			/	/	
1					13905692671
2				0551 - 63689612	13955192650
3					13705692935
4				0551 - 63689526	13866102135
5					13856006977
6				0551 - 63689511	13505510051
7					13955177267
8					13956080714
9					13955159790
10					13955146322
11					13856070408
12					13956043661
13					13955150989
14					13966741051
15					13956930396
16					13956043661
17					13855138318
18					13515643075
19					18788899500
20					13955164509
21					15956970511

1					
2					
3					
4					
5					
6					
			/	/	
1				13966741051	
2				15256985859	
3				13739258453	
4				13856907697	
5				15804291512	

1		
2		
3		
4		
5		
6		

1.

			/	/	
1				0551 - 63689612	13955192650
2					13955164509
3					13705692935
4				0551 - 63689526	13866102135
5					13856006977
6				0551 - 63689511	13505510051
7					13955177267
8					13956080714
9					13955159790
10					13955146322
11					13856070408
12					13956043661
13					13955150989

1					
2					
3					
1.					
			/	/	
1				13955150989	
2				13956930396	
3				13956043661	
4				13855138318	
5				13515643075	

1					
2					
3					
4					
1.					
			/	/	
1					18788899500
2					15856995525

1					
2					
3					
4					
1.					
			/	/	
1				13955164509	
2				13966768851	
3				13955142062	

10.8.1

10.8.2

10.8.3

10.8.4

10.8.5

10.8.6